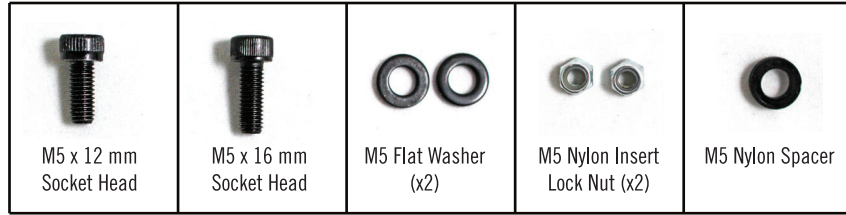


IMPORTANT:

PLEASE COMPLETELY UNDERSTAND ALL USER INSTRUCTIONS AND SAFETY INFORMATION BEFORE USING THIS PRODUCT. AS WITH ANY HIGH TECH PRODUCT YOU WILL NEED TO ROUTINELY CHECK FOR LOOSE HARDWARE, CRACKS OR OTHER DAMAGE AND REPLACE ITEMS AS NECESSARY. DO NOT USE PRODUCT IF ANY OF THESE CONDITIONS EXIST.

HARDWARE

CAGE MOUNTING



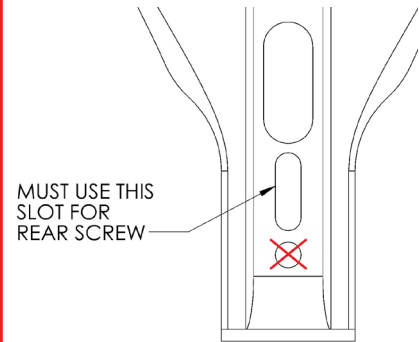
MOUNTING CLAMP



BOTTLE



COMPUTER MOUNT



AERO COMPUTER MOUNT

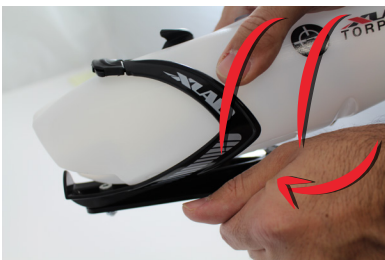


MOUNTING TO BIKE

TOOLS REQUIRED

3 mm Hex Wrench
Torque Wrench up to 4.0 Nm (35 in-lbs)

1. Rotate the top of the computer mount all the way forward to allow room for the bottle.
2. Remove the Torpedo Bottle from the cage by holding the mount and twisting the bottle and pulling out.



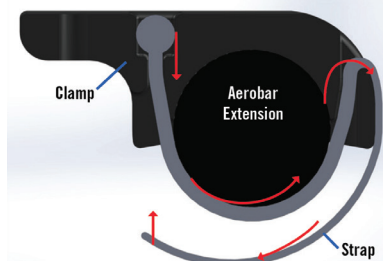
3. Loosen the mounting clamp screws using the 3 mm Hex Wrench.



4. Place the mount on the aerobars by placing each of the mounting clamps onto the extensions. Ensure the clamp is secure and completely touching the extensions.
5. Center the mounting plate and hand tighten each of the screws.



6. Secure the Velcro straps by routing them through the clamps. Pull the straps as tight as possible and attach them in place.



7. Tighten both mounting clamp screws to 4.0 Nm (35 in-lbs).

BOTTLE INSTALL

1. Select the appropriate straw hole. There are two straw holes on either side of the lid for a more forward or rearward straw position. The plug will go in the opposite hole of the straw and is pre-inserted in the rear straw hole. To switch, push the plug in from the top and remove from the bottle. Insert the plug in the new hole by pushing up from inside the bottle to seat it.



2. Trim the straw to the appropriate length for your use. Cut at an angle to make it easier to install.
3. Insert the straw by pinching the end and pushing through the appropriate hole. If using the solid lid, make sure the straw goes through the tether hole in the lid.
4. At the bottom of the Torpedo bottle, there is a groove. Place the straw in front of the groove to have the straw sit more horizontal; place the straw behind to make the straw more vertical.



5. Place the bottle in the cage by pushing the bottle straight back until it clicks and the bottle is locked in place. Make sure the rear tab of the cage slides into the rear bottle recess.



ADJUST VERSA COMPUTER MOUNT

TOOLS REQUIRED

3 mm Hex Wrench

Torque Wrench up to 2.8 Nm (25 in-lbs)

1. Loosen the side screw at the base of the mount.



2. Adjust the computer mount to the correct height by moving the post. The top can then be rotated to the preferred angle.



6. The pre-installed Dolphin Tail can be used to tuck the straw underneath to keep it out of the way while riding.



7. **DOLPHIN BREATHER VALVE INSTALL.** The bottle comes pre-installed with a breather valve to completely seal the Torpedo Bottle from leaks. If it is ever removed. **1.** Remove the old breather valve and clean off any remaining adhesive from the valve. **2.** Apply a small amount of food-grade silicone adhesive onto the underside of the new breather valve head. Insert into the hole, making sure the valve is fully inserted in the bottle per the Drawing. The top of the valve should be flat against the top of the bottle. **3.** Clean up any silicone that comes out the sides of the valve using a wet rag. The top of the valve should be completely flat against the bottle. **4.** Allow adhesive to set for at least 24 hours prior to using/washing. See **Figure (F)** for the profile of the valve in the bottle to see how the flange of the valve should fit in place.

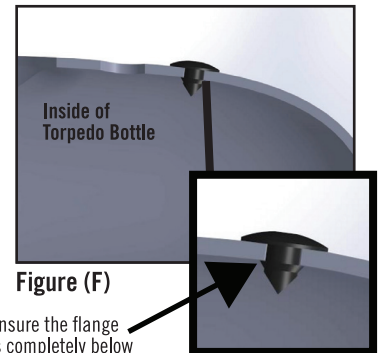


Figure (F)

Ensure the flange is completely below the bottle surface.

3. Tighten the side screw to lock in place and torque to 2.8 Nm (25 in-lbs). The screw must be fully tightened for the computer mount to stay in place.
4. Attach the computer and rotate as needed.



FOR GARMIN MULTISPORT WATCHES & WAHOO COMPUTERS

Note: For Polar and strap-mounted computers, those adapters are included in the **TORPEDO COMPUTER ADAPTER KIT**, available separately.

TOOLS REQUIRED

- 2 mm Hex Wrench
- Torque Wrench up to 1.1 Nm (10 in-lbs)

1. Remove the two screws at the top of the computer mount using the 2 mm Hex Wrench.



2. Rotate the holder 90 degrees.



3. Reinsert the screws and tighten.
4. Torque both screws to 1.1 Nm (10 in-lbs)

IF USING THE AERO COMPUTER MOUNT

The XLAB Aero Computer Mount is designed to work with most computers and can be used in place of the Versa Computer Mount.

TOOLS REQUIRED

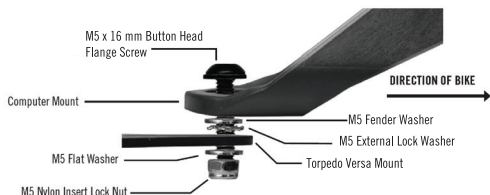
- 2.5 mm Hex Wrench
- 3 mm Hex Wrench
- 8 mm Open Ended Wrench
- Torque Wrench up to 4.0 Nm (35 in-lbs)

1. Remove the Versa Computer Mount by removing the two M4 Button Head screws at the front of the Torpedo Versa Mounting Plate using the 2.5 mm Hex Wrench.

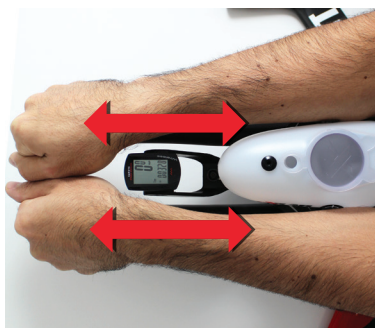


2. The Aero Computer Mount uses the larger center hole at the front of the Torpedo Versa Mounting Plate.

3. Place the M5 x 16 mm screw through the Aero Computer Mount, through the M5 Fender Washer, through the M5 External Lock Washer, through the Versa Mounting Plate, through the M5 Flat Washer, and into the M5 Nylon Insert Lock Nut.



4. Adjust the position of the computer mount so the computer sits just behind the rider's wrist by sliding it forward or backwards.



5. While holding the Lock Nut in place with the 8 mm Open Ended Wrench, torque the screw to 4.0 Nm (35 in-lbs).

WARRANTY

- Versa Aluminum Mounting Plate - 3 Year
- Vee Cage - 3 Year
- Torpedo Computer Mount - Limited 3 Year
- Torpedo Bottle - Limited 3 Year
- All Other Parts - Limited 6 Month

BOTTLE CARE

HAND WASH YOUR TORPEDO BOTTLE, STRAW, PLUG, BITE VALVE, AND LID EVERY TIME YOU USE IT AND BEFORE INITIAL FIRST USE.

When cleaning by hand it is not necessary to remove the accessories.

1. Fill Torpedo Bottle with soapy water.
3. Use one hand to cover the holes on top of the bottle.
4. Shake bottle vigorously.
5. Rinse and repeat.

STRAW CARE

Hand wash straw in lukewarm water only. Use a long thin brush to clean tube. Hot water or the dishwasher will damage straw material.